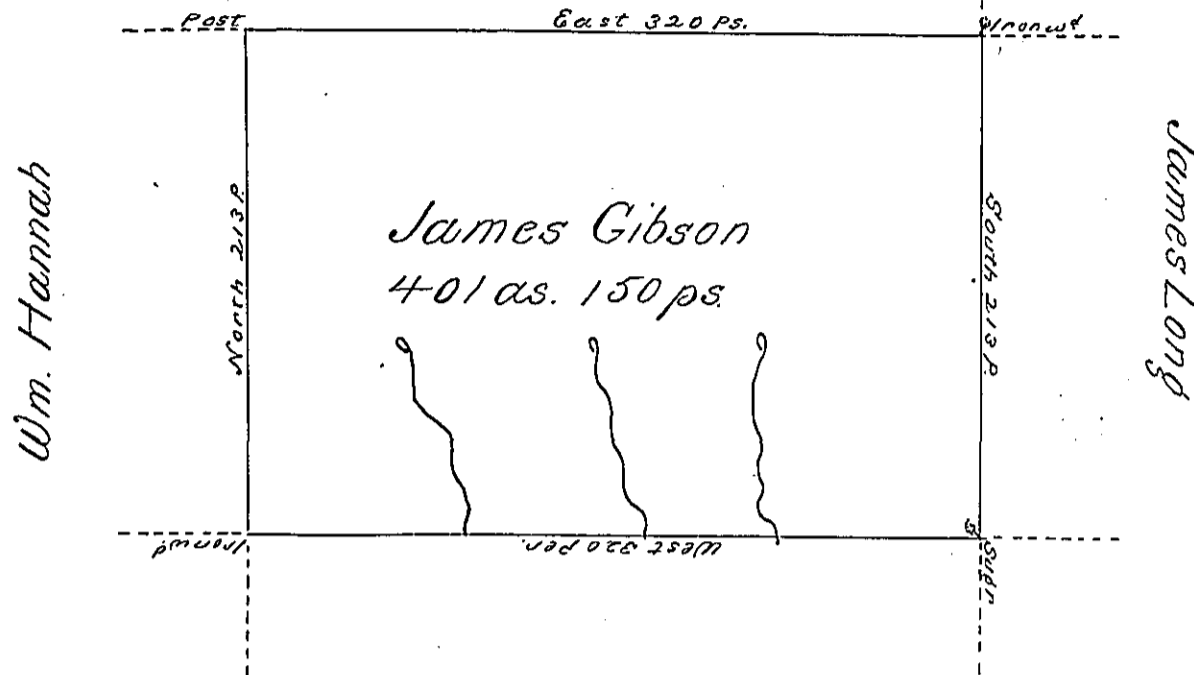


Ann Gibson



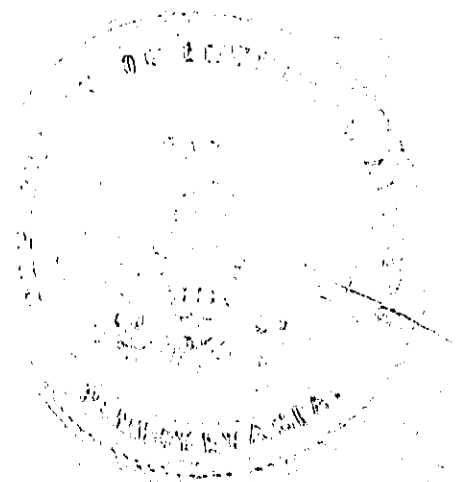
Eliza Gibson

Situate on the Waters of French Creek below Lebeuff in Allegheny County containing 401 ac and 150 perches & allowance of Six percent for Roads &c. Surveyed the 11th day of June 1795 In pursuance of a Warrant dated the 30th day of May 1792

Wm Power Dybr

To Danl. Brodhead Esq^r }
 Surveyor General }

IN TESTIMONY that the above is a copy of the original remaining on file in the Department of Internal Affairs of Pennsylvania, made conformably to an Act of Assembly approved the 16th day of February, 1833, I have hereunto set my Hand and caused the Seal of said Department to be affixed at Harrisburg, this third day of October 1899



James W. Latta
 Secretary of Internal Affairs.